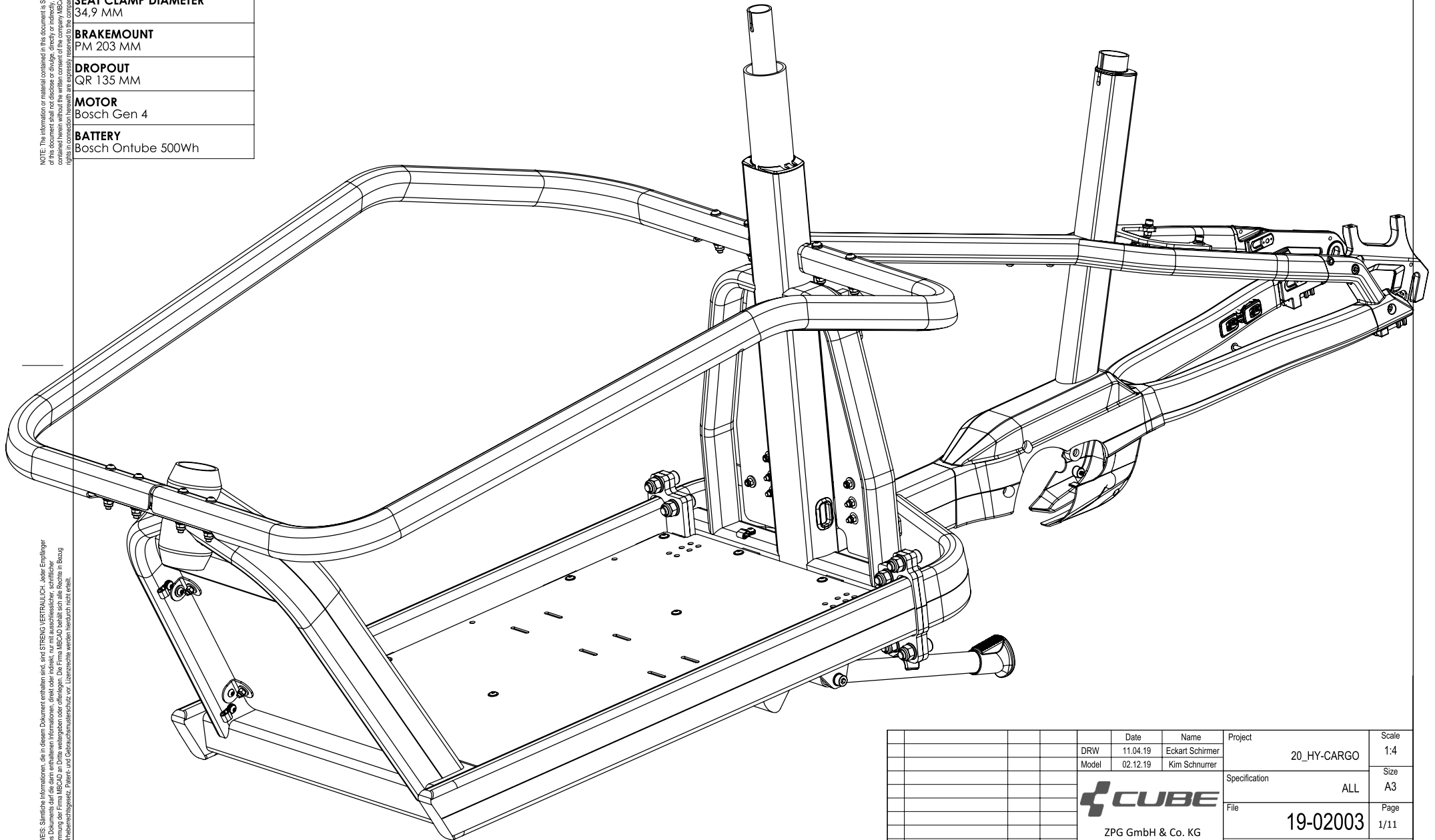


NOTE: The information or material contained in this document is STRICTLY CONFIDENTIAL and any recipient of this document shall not disclose or divulge, directly or indirectly, this document or the information or material contained herein without the written consent of the company MBCAD. All copyrights, trademarks, patents and other rights in connection herewith are expressly reserved to the company MBCAD and no license is created hereby.


HEADSET DIMENSION
Top: 1 1/8" semi integrated
Bottom: 1 1/8" semi integrated
STEERING TUBE BEARING
Top: 1 1/8" semi integrated
Bottom: 1 1/8" semi integrated
SEAT POST DIAMETER
30,9 MM
SEAT CLAMP DIAMETER
34,9 MM
BRAKEMOUNT
PM 203 MM
DROPOUT
QR 135 MM
MOTOR
Bosch Gen 4
BATTERY
Bosch Ontube 500Wh

20_HY-O4-C2

ALL



HINWEIS: Sämtliche Informationen, die in diesem Dokument enthalten sind, sind STRENG VERTRAULICH. Jeder Empfänger dieses Dokuments darf die darin enthaltenen Informationen, direkt oder indirekt, nur mit ausdrücklicher schriftlicher Zustimmung der Firma MBCAD an Dritte weitergeben oder offenlegen. Die Firma MBCAD behält sich alle Rechte in Bezug auf Urheberrecht, Patent- und Gebrauchsmusterschutz vor. Lizenzrechte werden hierdurch nicht erteilt.

			Date	Name	Project	Scale
			DRW	11.04.19	Eckart Schirmer	1:4
			Model	02.12.19	Kim Schnurrer	
					20_HY-CARGO	Size
						A3
					Specification	ALL
					File	Page
					19-02003	1/11
R	Revision	Date	Name	 ZPG GmbH & Co. KG		

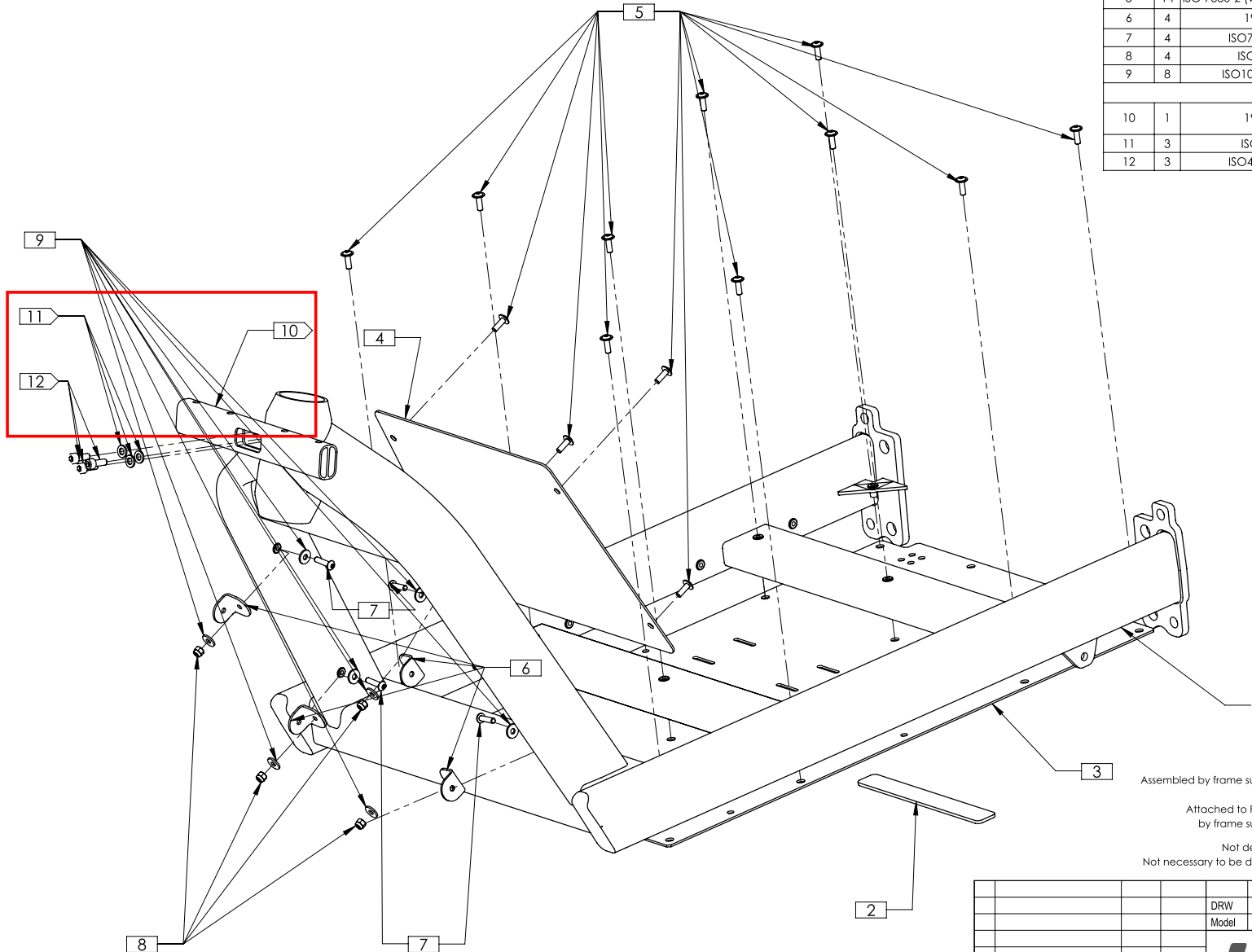
NOTE: The information or material contained in this document is STRICTLY CONFIDENTIAL and any recipient of this document shall not disclose or divulge, directly or indirectly, this document or the information or material contained herein without the written consent of the company MBCAD. All copyrights, trademarks, patents and other rights in connection herewith are expressly reserved to the company MBCAD and no license is created hereby.

STEERING TUBE BEARING
 Top: 1 1/8" semi integrated
 Bottom: 1 1/8" semi integrated

20_HY-O4-C2

FRONT

(Assembled by frame supplier)



POS-No.	QTY	FILE-No.	ITEM No.	DESCRIPTION	NOTES
1	1	19-02004		frame_20_HY-CARGO	
Assembled by frame supplier					
2	1	20-01050		protection-kickstand_20_HY-CARGO	
3	1	18-06292	3354	BASEPLATE-MIDDLE_20_HY-CARGO	
4	1	19-03615	3353	BASEPLATE-FRONT_20_HY-CARGO	
5	14	ISO 7380-2 (with flange) M5x15		SCREW	
6	4	19-03983	3338	L-shape-steel_20_HY-CARGO	
7	4	ISO7380M5x15		SCREW	
8	4	ISO7040M5		NUT	
9	8	ISO10669-5.4x1.6		WASHER	
Attached to frame by frame supplier					
10	1	19-05384		ft_support_front_20_HY-CARGO	
11	3	ISO7090-6		WASHER	
12	3	ISO4762M6x1.6		SCREW	

label with: "Beipack"

label with: "Montage"

- Pre-Assembled by Frame Supplier -thread in only, no torque-
- Assembled by frame supplier
- Attached to Frame by frame supplier
- Not defined. Not necessary to be defined
- Assembled by CUBE
- Option: Assembled by CUBE
- Packed as Accessory at CUBE

DRW	Date	Name	Project	Scale
	11.04.19	Eckart Schirmer	20_HY-CARGO	1:4
	28.11.19	Kim Schnurrer		
			Specification	Size
			FRONT_FRS	A3
			File	Page
			19-02003	2/11
ZPG GmbH & Co. KG				
R	Revision	Date	Name	

HINWEIS: Sämtliche Informationen, die in diesem Dokument enthalten sind, sind STRENG VERTRAULICH. Jeder Empfänger dieses Dokuments darf die darin enthaltenen Informationen, direkt oder indirekt, nur mit ausdrücklicher schriftlicher Zustimmung der Firma MBCAD an Dritte weitergeben oder offenlegen. Die Firma MBCAD behält sich alle Rechte in Bezug auf Urheberrechtsgesetz, Patent- und Gebrauchsmusterschutz vor. Lizenzrechte werden hierdurch nicht erteilt.

NOTE: The information or material contained in this document is STRICTLY CONFIDENTIAL and any recipient of this document shall not disclose or divulge, directly or indirectly, this document or the information or material contained herein without the written consent of the company MBCAD. All copyrights, trademarks, patents and other rights in connection herewith are expressly reserved to the company MBCAD and no license is created hereby.

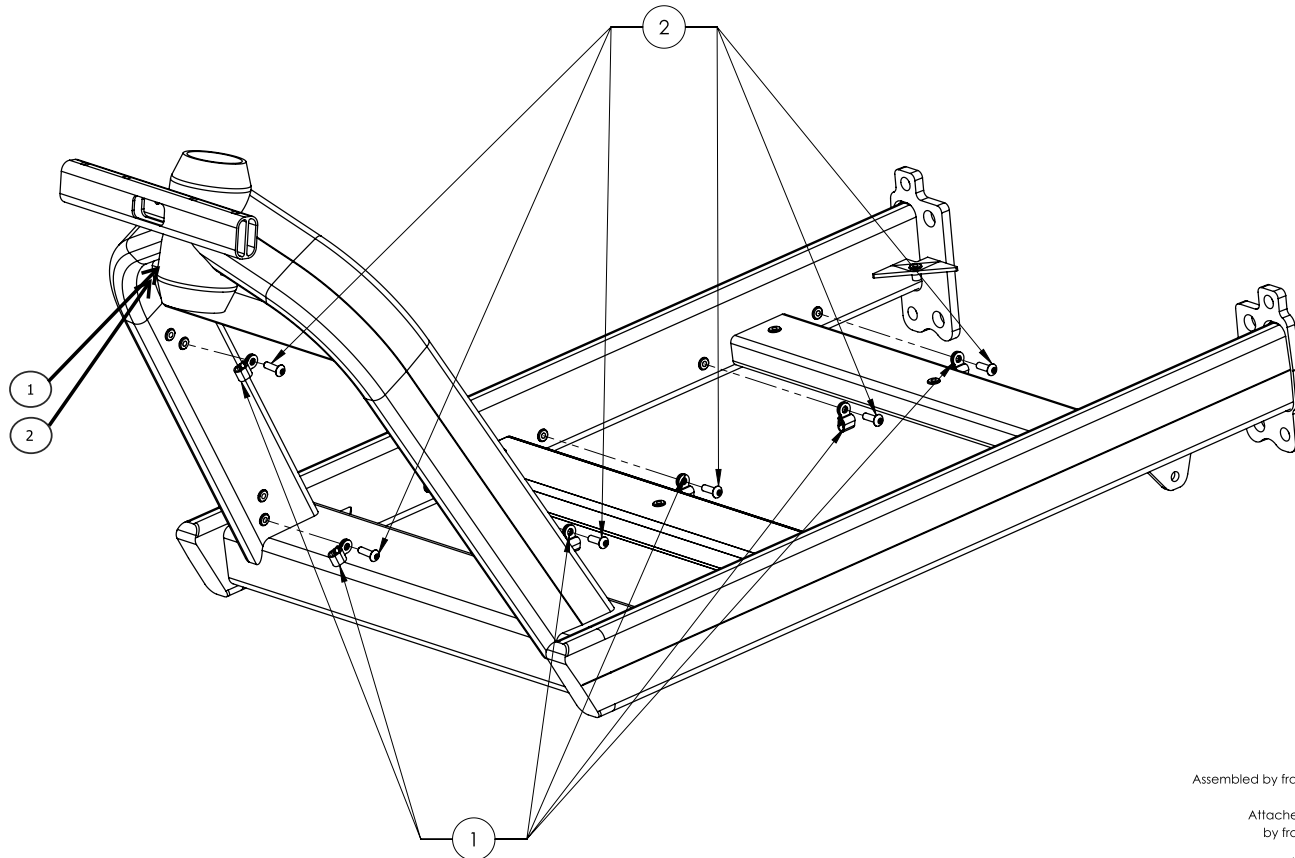
STEERING TUBE BEARING
 Top: 1 1/8" semi integrated
 Bottom: 1 1/8" semi integrated

20_HY-O4-C2

FRONT

(Assembled in Germany)

POS-No.	QTY	FILE-No.	ITEM No.	DESCRIPTION	NOTES
Assembled in Germany					
1	9	15-00864	33935	CR_cgu/cgu-scrd	
2	9	ISO7380-M5x10		SCREW	



- Pre-Assembled by Frame Supplier
-thread in only, no torque-
- Assembled by frame supplier Assembled by CUBE
- Attached to Frame by frame supplier Option: Assembled by CUBE
- Not defined, Not necessary to be defined Packed as Accessory at CUBE

HINWEIS: Sämtliche Informationen, die in diesem Dokument enthalten sind, sind STRENG VERTRAULICH. Jeder Empfänger dieses Dokuments darf die darin enthaltenen Informationen, direkt oder indirekt, nur mit ausschliesslicher schriftlicher Zustimmung der Firma MBCAD an Dritte weitergeben oder offenlegen. Die Firma MBCAD behält sich alle Rechte in Bezug auf Urheberrechtsgesetz, Patent- und Gebrauchsmusterschutz vor. Lizenzrechte werden hierdurch nicht erteilt.

		Date	Name	Project	Scale
		DRW	11.04.19	Eckart Schirmer	1:4
		Model	28.11.19	Kim Schnurrer	Size
				20_HY-CARGO	A3
				Specification	FRONT_GER
				File	19-02003
					Page 3/11
R	Revision	Date	Name	ZPG GmbH & Co. KG	

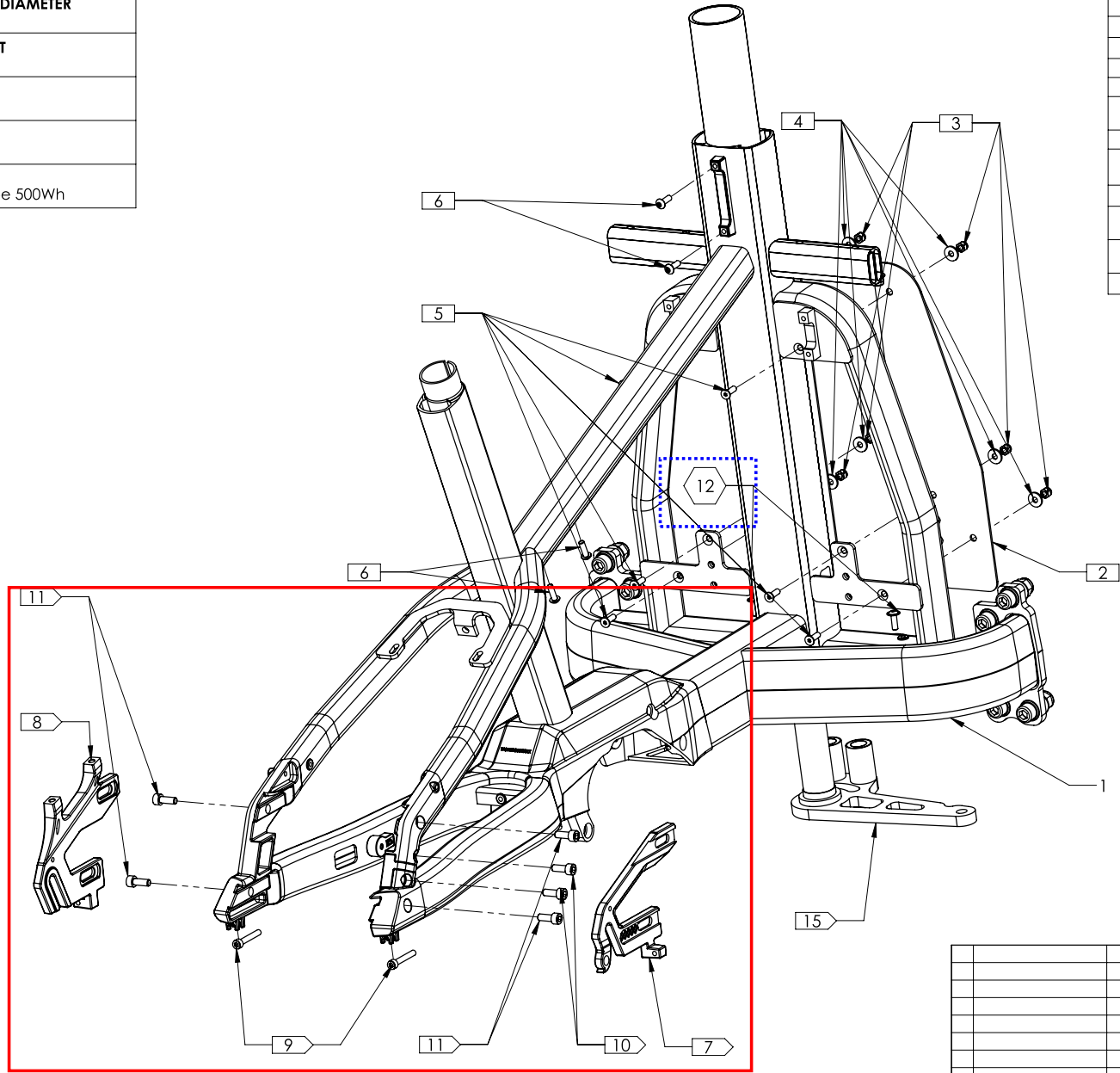
NOTE: The information or material contained in this document is STRICTLY CONFIDENTIAL and any recipient of this document shall not disclose or divulge, directly or indirectly, this document or the information or material contained herein without the written consent of the company MBCAD. All copyrights, trademarks, patents and other rights in connection herewith are expressly reserved to the company MBCAD and no license is created hereby.

HEADSET DIMENSION
Top: 1 1/8" semi integrated
Bottom: 1 1/8" semi integrated
STEERING TUBE BEARING
Top: 1 1/8" semi integrated
Bottom: 1 1/8" semi integrated
SEAT POST DIAMETER
30,9 MM
SEAT CLAMP DIAMETER
34,9 MM
BRAKEMOUNT
PM 203 MM
DROPOUT
QR 135 MM
MOTOR
Bosch Gen 4
BATTERY
Bosch Ontube 500Wh

20_HY-O4-C2

REAR

(Assembled by frame supplier)



POS-No.	QTY	FILE-No.	ITEM No.	DESCRIPTION	NOTES
1	1	19-02004		frame_20_HY-CARGO	
Assembled by frame supplier					
2	1	19-03614		BASEPLATE-BACK_20_HY-CARGO (L+R)	
3	6	ISO7040M5		NUT	
4	6	ISO10669-5.4x1.6		WASHER	
5	6	ISO10642M5x1.6		SCREW	
6	4	ISO 7380 M5x12		SCREW	
Attached to frame by frame supplier					
7	1	19-00068	3340	do-a-right_20_HY-CARGO	
8	1	19-00070	3339	do-a-left_20_HY-CARGO	
9	2	DIN 6912 M5x35 --35C		SCREW	
11	4	ISO 4762 M6x16 10.9		SCREW	
10	2	ISO4762M6x16		SCREW	10 Nm
Assembled in Germany					
15	1	19-05304	3347	steering_arm_20_HY-CARGO	
Packed as accessories at Cube					
12	2	ISO 7380-2 (with flange) M5x15		SCREW	

label with: "Beipack"

label with: "Montage"

- Pre-Assembled by Frame Supplier ←
- Thread in only, no torque-
- Assembled by frame supplier ←
- Assembled by CUBE ←
- Attached to Frame by frame supplier ←
- Option: Assembled by CUBE ←
- Not defined, Not necessary to be defined ←
- Packed as Accessory at CUBE ←

Date	Name	Project	Scale
DRW 11.04.19	Eckart Schirmer	20_HY-CARGO	1:4
Model 28.11.19	Kim Schnurrer		
		Specification	REAR_FRS
		File	19-02003
ZPG GmbH & Co. KG			Page 4/11
R	Revision	Date	Name

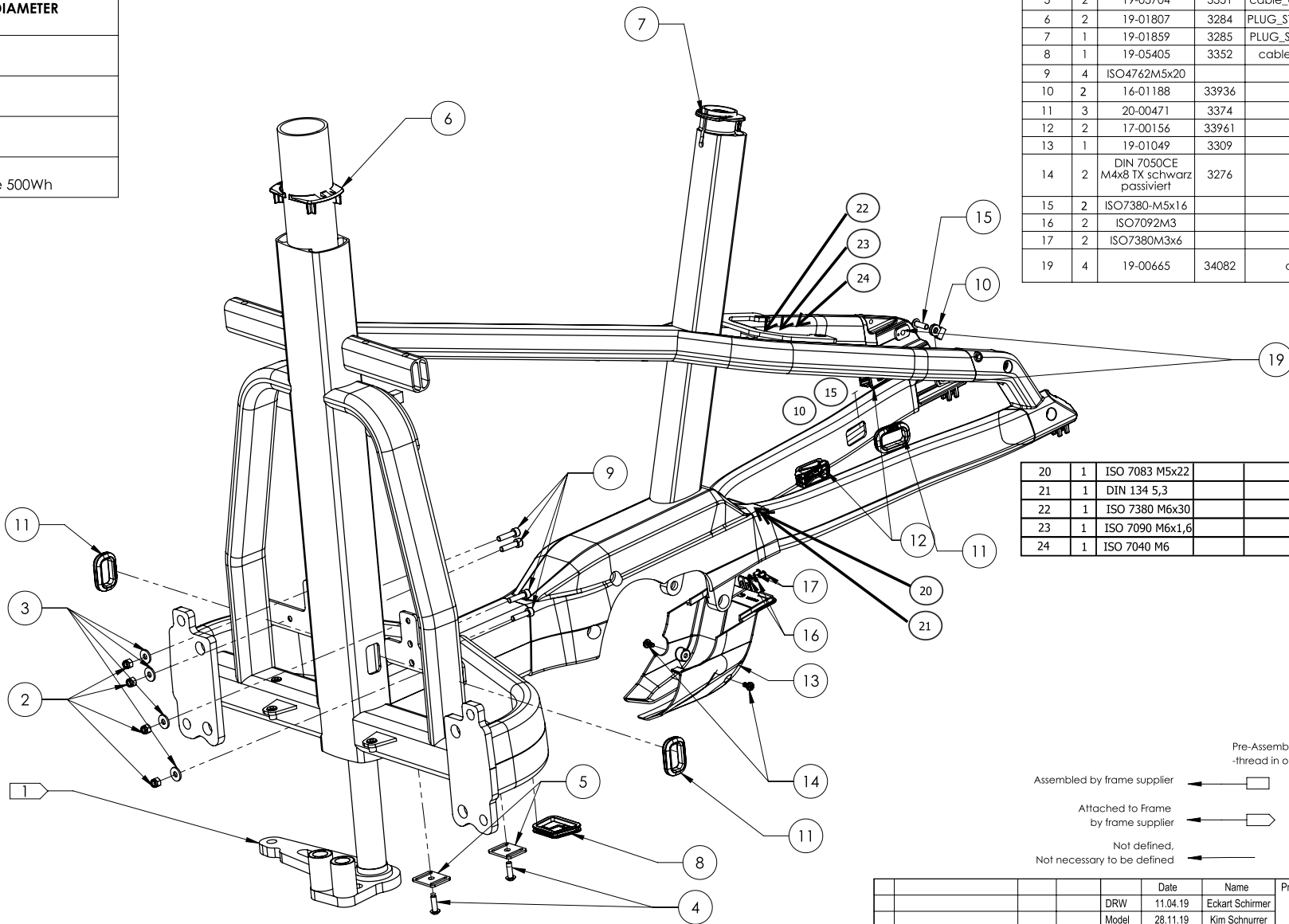
HINWEIS: Statische Informationen, die in diesem Dokument enthalten sind, sind STRENG VERTRAULICH. Jeder Empfänger dieses Dokuments darf die darin enthaltenen Informationen, direkt oder indirekt, nur mit ausschliesslicher schriftlicher Zustimmung der Firma MBCAD an Dritte weitergeben oder offenlegen. Die Firma MBCAD behält sich alle Rechte in Bezug auf Urheberrecht, Patent- und Gebrauchsmusterschutz vor. Lizenzrechte werden hierdurch nicht erteilt.

NOTE: The information or material contained in this document is STRICTLY CONFIDENTIAL and any recipient of this document shall not disclose or divulge, directly or indirectly, this document or the information or material contained herein without the written consent of the company MIB-CAD. All copyrights, trademarks, patents and other rights in connection herewith are expressly reserved to the company MIB-CAD and no license is created hereby.

HINWEIS: Sämtliche Informationen, die in diesem Dokument enthalten sind, sind STRENG VERTRAULICH. Jeder Empfänger dieses Dokuments darf die darin enthaltenen Informationen, direkt oder indirekt, nur mit ausdrücklicher schriftlicher Zustimmung der Firma MIB-CAD an Dritte weitergeben oder offenlegen. Die Firma MIB-CAD behält sich alle Rechte in Bezug auf Urheberrecht, Patent- und Gebrauchsmusterschutz vor. Lizenzrechte werden hierdurch nicht erteilt.

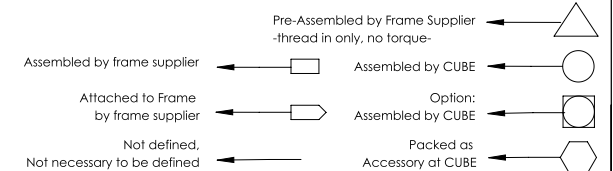
HEADSET DIMENSION
Top: 1 1/8" semi integrated
Bottom: 1 1/8" semi integrated
STEERING TUBE BEARING
Top: 1 1/8" semi integrated
Bottom: 1 1/8" semi integrated
SEAT POST DIAMETER
30,9 MM
SEAT CLAMP DIAMETER
34,9 MM
BRAKEMOUNT
PM 203 MM
DROPOUT
QR 135 MM
MOTOR
Bosch Gen 4
BATTERY
Bosch Ontube 500Wh

20_HY-O4-C2 REAR (Assembled in Germany)



POS-No.	QTY	FILE-No.	ITEM No.	DESCRIPTION	NOTES
Attached to frame by frame supplier					
1	1	19-05304	3347	steering_arm-_20_HY-CARGO	
Assembled in Germany					
2	4	ISO7040M5		NUT	
3	4	ISO10669-5.4x1.6		WASHER	
4	2	ISO7380M5x1.6		SCREW	
5	2	19-05704	3351	cable_clamp_middle-_20_HY-CARGO	
6	2	19-01807	3284	PLUG_STT-_20_HY-O4-C2-_20_HY-CARGO	
7	1	19-01859	3285	PLUG_ST-_20_HY-O4-C2-_20_HY-CARGO	
8	1	19-05405	3352	cablehole_plug-BB-_20_HY-CARGO	
9	4	ISO4762M5x20		SCREW	
10	2	16-01188	33936	CR_cgu-scrd	
11	3	20-00471	3374	CR_sth/bth-30x17	
12	2	17-00156	33961	_CR_sth/bth-30x17	
13	1	19-01049	3309	cover_20_HY-CARGO	
14	2	DIN 7050CE M4x8 TX schwarz passiviert	3276	SCREW	
15	2	ISO7380-M5x1.6		SCREW	
16	2	ISO7092M3		WASHER	
17	2	ISO7380M3x6		SCREW	
19	4	19-00665	34082	do-slider_20_HY-CARGO	15 Nm

20	1	ISO 7083 M5x22		SCREW
21	1	DIN 134 5,3		WASHER
22	1	ISO 7380 M6x30		SCREW
23	1	ISO 7090 M6x1,6		WASHER
24	1	ISO 7040 M6		NUT



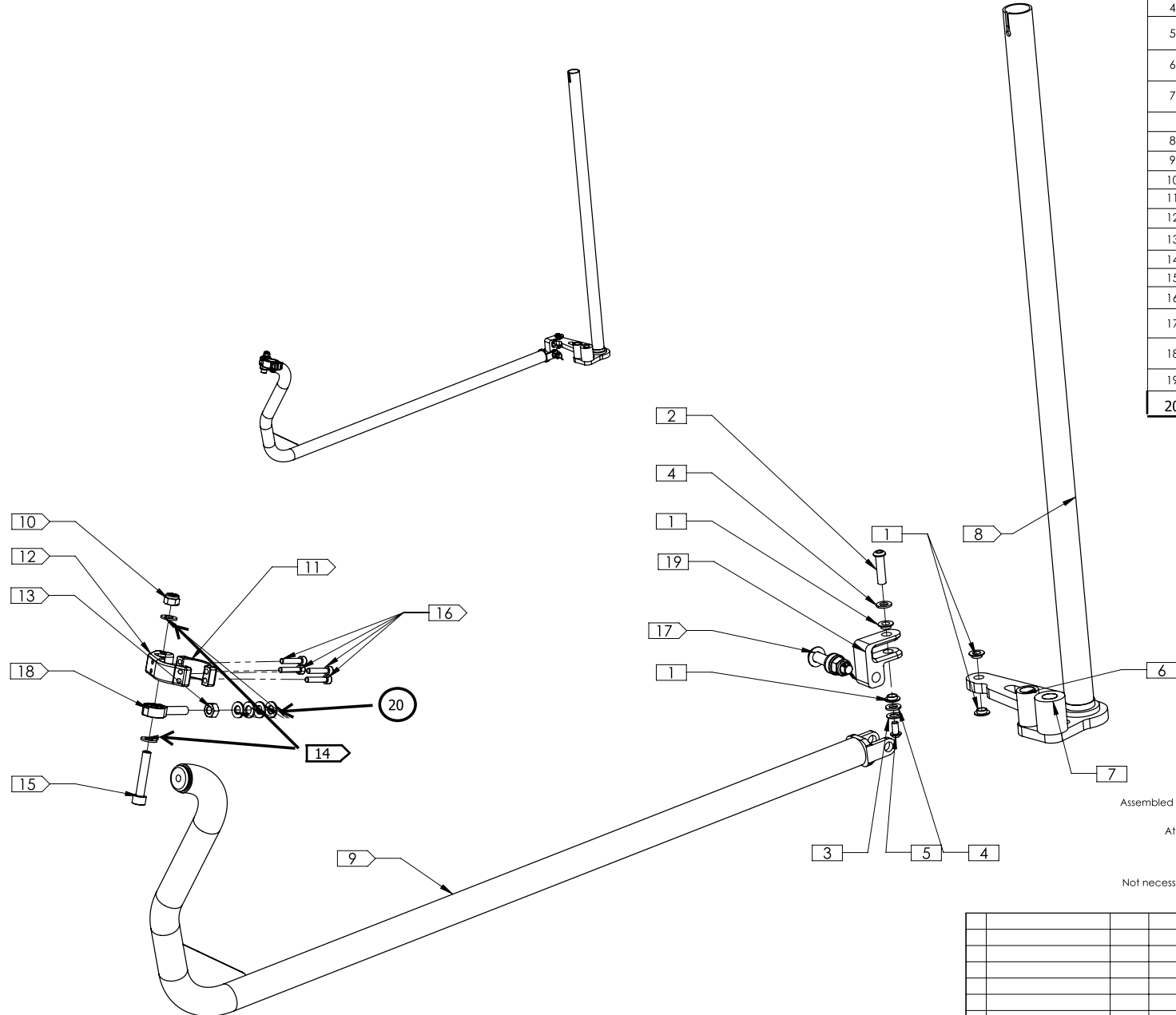
DRW	Date	Name	Project	Scale
	11.04.19	Eckart Schirmer	20_HY-CARGO	1:4
	28.11.19	Kim Schnurrer		
			Specification	Size
			REAR_GER	A3
			File	Page
			19-02003	5/11
ZPG GmbH & Co. KG				
R	Revision	Date	Name	

NOTE: The information or material contained in this document is STRICTLY CONFIDENTIAL and any recipient of this document shall not disclose or divulge, directly or indirectly, the content of the information or material contained herein without the written consent of the company MBCAD. All copyrights, trademarks, patents and other rights in connection herewith are expressly reserved to the company MBCAD and no license is created hereby.

HINWEIS: Sämtliche Informationen, die in diesem Dokument enthalten sind, sind STRENG VERTRAULICH. Jeder Empfänger dieses Dokuments darf die darin enthaltenen Informationen, direkt oder indirekt, nur mit ausschliesslicher schriftlicher Zustimmung der Firma MBCAD an Dritte weitergeben oder offenlegen. Die Firma MBCAD behält sich alle Rechte in Bezug auf Urheberrechtsgesetz, Patent- und Gebrauchsmusterschutz vor. Lizenzrechte werden hierdurch nicht erteilt.

20_HY-O4-C2 STEERING COMPLETE

POS-No.	QTY	FILE-No.	ITEM No.	DESCRIPTION	NOTES
Assembled by frame supplier					
1	4	20-01329		bearing IGS 10x8x4	
2	1	19-04765		SLEEVE-M6x30x7,9	
3	1	DINI 37-B8-Federscheibe		WASHER	
4	2	Washer ISO 7092 - 8		washer	
5	1	ISO7380 - M6x12		SCREW	12 Nm
6	1	20-02087	3499	Steering stopper-22mm_soft_20_HY-CARGO	
7	1	20-06132	3500	Steering stopper-30mm_hard_20_HY-CARGO	
Attached to frame by frame supplier					
8	1	19-02893		steering-shaft_20_HY-CARGO	
9	1	19-05306	3350	steering_rod-_20_HY-CARGO	
10	1	ISO7040M8		NUT	
11	1	19-04837		fork clamp 1-_20_HY-CARGO	
12	1	19-04836		fork clamp 2-_20_HY-CARGO	
13	1	ISO 4032_M8		NUT	lock
14	2	ISO7090M8		WASHER_-	
15	1	ISO4762 M8x45		SCREW	
16	4	ISO4762M5x25		SCREW	7Nm
17	1	20-02369	3403	SET-SPLINT-SCREW-_20_HY-O4-C2	
18	1	20-06161		JOINT-HEAD_20_HY-O4-C2	
19	1	19-02889	3349	LINK-F-SHAPE_20_HY-CARGO	
20	4	ISO 7090 M8	35165	WASHER	



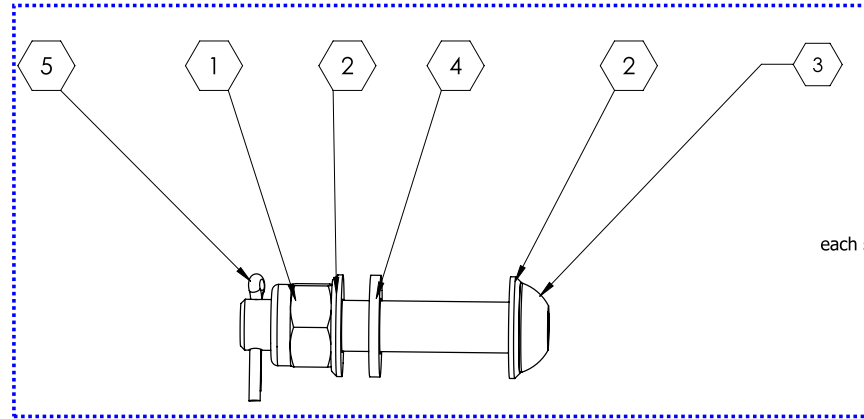
- Pre-Assembled by Frame Supplier -thread in only, no torque-
- Assembled by frame supplier
- Attached to Frame by frame supplier
- Not defined, Not necessary to be defined
- Assembled by CUBE
- Option: Assembled by CUBE
- Packed as Accessory at CUBE

			Date	Name	Project	Scale
	DRW	11.04.19	Eckart Schirmer		20_HY-CARGO	1:4
	Model	06.12.19	Eckart Schirmer			Size
					Specification	A3
					File	Page
					19-02003	6/14
R	Revision	Date	Name			



NOTE: The information or material contained in this document is STRICTLY CONFIDENTIAL and any recipient of this document shall not disclose or divulge, directly or indirectly, this document or the information or material contained herein without the written consent of the company MBCAD. All copyrights, trademarks, patents and other rights in connection herewith are expressly reserved to the company MBCAD and no license is created hereby.

20-HY-O4-C2 SPLINT SCREW SET



each set in one bag or box


label with: "Beipack"

label with: "Montage"

POS-No.	QTY	FILE-No.	ITEM No.	DESCRIPTION	NOTES
1	1	ISO7040M10		NUT	
2	2	ISO7090-10		WASHER	
3	1	20-02233		SCREW_withSPLINT_ISO 7380M10x55	
4	1	ISO 7091 M10x2		WASHER	
5	1	20-02328		SPLINT-2,5x20_20_HY- CARGO	

HINWEIS: Sämtliche Informationen, die in diesem Dokument enthalten sind, sind STRENG VERTRAULICH. Jeder Empfänger dieses Dokuments darf die darin enthaltenen Informationen, direkt oder indirekt, nur mit ausschliesslicher schriftlicher Zustimmung der Firma MBCAD an Dritte weitergeben oder offenlegen. Die Firma MBCAD behält sich alle Rechte in Bezug auf Urheberrechtsgesetz, Patent- und Gebrauchsmusterschutz vor. Lizenzrechte werden hierdurch nicht erteilt.

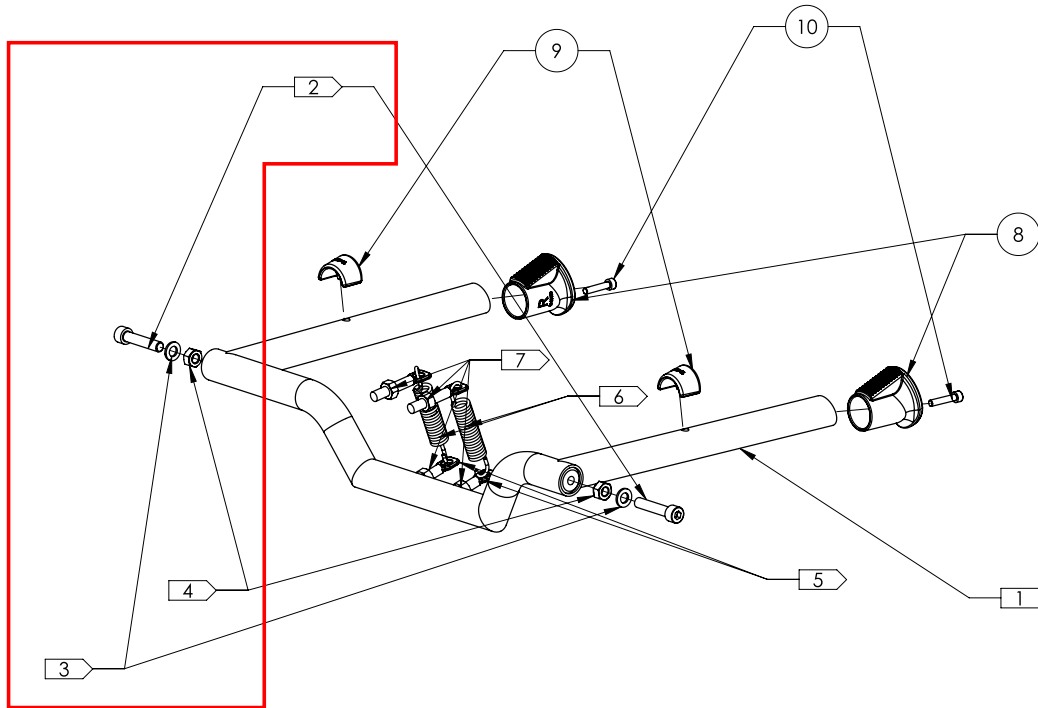
2D / DRW-file Last update | Version
Eckart Schirmer#05.2020 | 40

R	Revision	Date	Name	Date	Name	Project	Scale
				11.04.19	Eckart Schirmer	20_HY-CARGO	1:1
				27.11.19			
				 ZPG GmbH & Co. KG		Specification	SPLINT-SCREW- SET 19-02003
						File	

NOTE: The information or material contained in this document is STRICTLY CONFIDENTIAL and any recipient of this document shall not disclose or divulge, directly or indirectly, this document or the information or material contained herein without the written consent of the company MBCAD. All copyrights, trademarks, patents and other rights in connection herewith are expressly reserved to the company MBCAD and no license is created hereby.

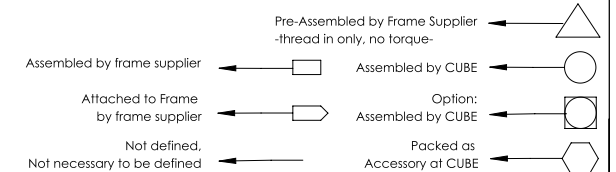
HEADSET DIMENSION Top: 1 1/8" semi integrated Bottom: 1 1/8" semi integrated
STEERING TUBE BEARING Top: 1 1/8" semi integrated Bottom: 1 1/8" semi integrated
SEAT POST DIAMETER 30,9 MM
SEAT CLAMP DIAMETER 34,9 MM
BRAKEMOUNT PM 203 MM
DROPOUT QR 135 MM
MOTOR Bosch Gen 4
BATTERY Bosch Ontube 500Wh

20_HY-O4-C2 KICKSTAND (Assembled in Germany)



POS-No.	QTY	FILE-No.	ITEM No.	DESCRIPTION	NOTES
Attached to frame by frame supplier					
1	1	19-05393		Kickstand-V2_20_HY-CARGO	
2	2	ISO4762M8x40			
3	2	ISO7092M8x1.6		WASHER	
4	2	ISO4032M8		NUT	
5	4	20-06137		HOLE_SCREW_20_HY-CARGO	
6	2	20-06135		SPRING_20_HY-CARGO	
7	4	ISO 4032_M8		NUT	
Assembled in Germany					
8	1	19-05400	3344	standfeet-left/right_20_HY-CARGO	
9	2	19-05300	3346	kickstand-bumper_20_HY-CARGO	
10	2	ISO4762M5x25		SCREW	

label with: "Montage"



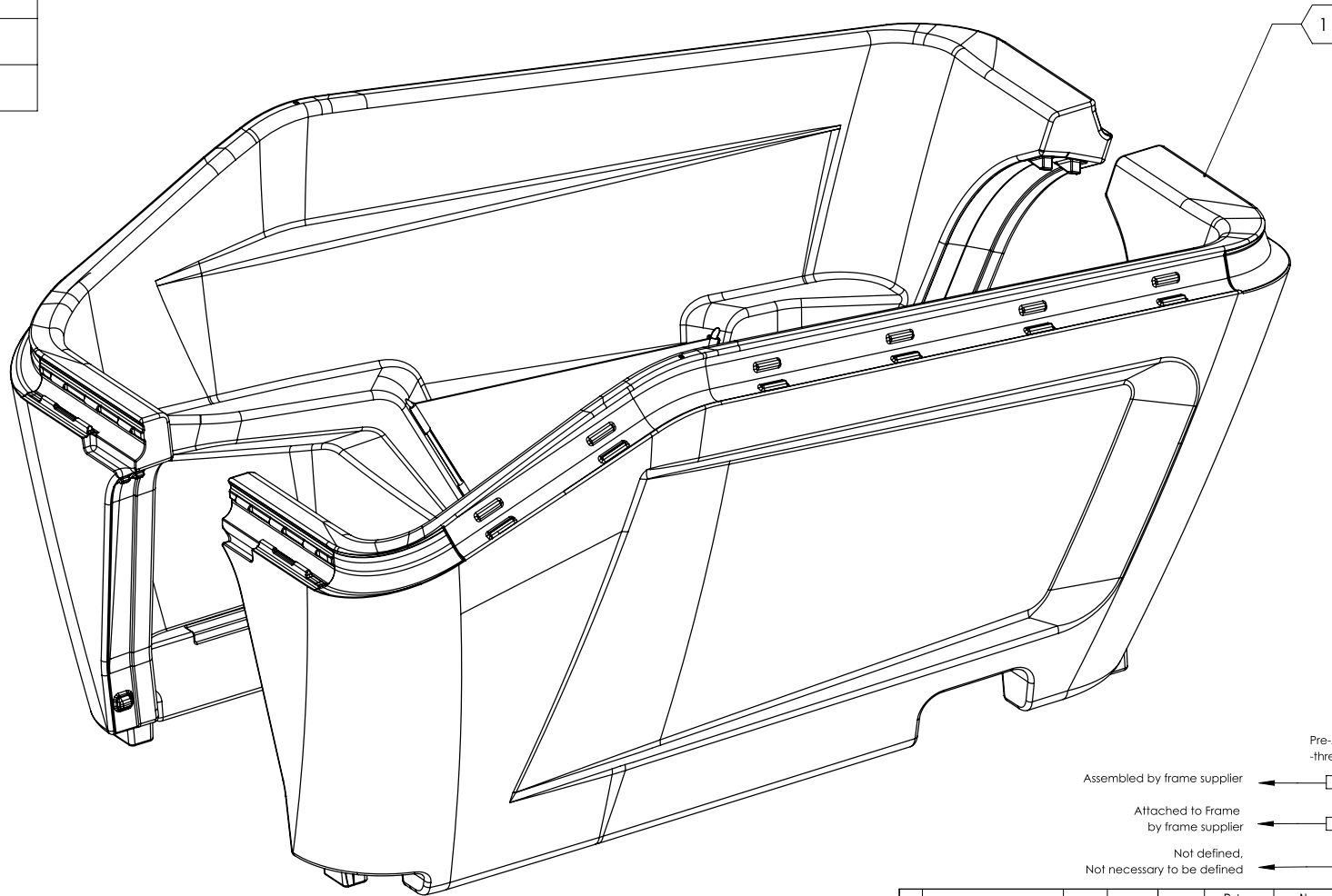
HINWEIS: Sämtliche Informationen, die in diesem Dokument enthalten sind, sind STRENG VERTRAULICH. Jeder Empfänger dieses Dokuments darf die darin enthaltenen Informationen, direkt oder indirekt, nur mit ausschliesslicher schriftlicher Zustimmung der Firma MBCAD an Dritte weitergeben oder offenlegen. Die Firma MBCAD behält sich alle Rechte in Bezug auf Urheberrechtsgesetz, Patent- und Gebrauchsmusterschutz vor. Lizenzrechte werden hierdurch nicht erteilt.

			Date	Name	Project	Scale
			DRW	11.04.19	Eckart Schirmer	1:4
			Model	06.12.19	Eckart Schirmer	
					Specification	Size
					KICKSTAND	A3
			ZPG GmbH & Co. KG		File	Page
					19-02003	8/11
R	Revision	Date	Name			

20_HY-O4-C2 BOX (Assembled by dealer)

POS-No.	QTY	FILE-No.	ITEM No.	DESCRIPTION	NOTES
Packed as Accessory at CUBE					
1	1	19-03613	3341 / 3342	BOX-EPP_20_HY-CARGO	

HEADSET DIMENSION Top: 1 1/8" semi integrated Bottom: 1 1/8" semi integrated
STEERING TUBE BEARING Top: 1 1/8" semi integrated Bottom: 1 1/8" semi integrated
SEAT POST DIAMETER 30,9 MM
SEAT CLAMP DIAMETER 34,9 MM
BRAKEMOUNT PM 203 MM
DROPOUT QR 135 MM
MOTOR Bosch Gen 4
BATTERY Bosch Ontube 500Wh



- Pre-Assembled by Frame Supplier ←
- Thread in only, no torque-
- Assembled by frame supplier ←
- Assembled by CUBE ←
- Attached to frame by frame supplier ←
- Option: Assembled by CUBE ←
- Not defined, Not necessary to be defined ←
- Packed as Accessory at CUBE ←

Date	Name	Project	Scale
DRW 11.04.19	Eckart Schirmer	20_HY-CARGO	1:4
Model 06.12.19	Eckart Schirmer		
ZPG GmbH & Co. KG		Specification	BOX
		File	19-02003
R		Revision	Date
		Date	Name

NOTE: The information or material contained in this document is STRICTLY CONFIDENTIAL and any recipient of this document shall not disclose or divulge, directly or indirectly, this document or the information or material contained herein without the written consent of the company MIB-CAD. All copyrights, trademarks, patents and other rights in connection therewith are expressly reserved to the company MIB-CAD and no license is created hereby.

HINWEIS: Sämtliche Informationen, die in diesem Dokument enthalten sind, sind STRENG VERTRAULICH. Jeder Empfänger dieses Dokuments darf die darin enthaltenen Informationen, direkt oder indirekt, nur mit ausschliesslicher schriftlicher Zustimmung der Firma MIB-CAD an Dritte weitergeben oder offenlegen. Die Firma MIB-CAD behält sich alle Rechte in Bezug auf Urheberrecht, Patent- und Gebrauchsmusterschutz vor. Lizenzrechte werden hierdurch nicht erteilt.

20_HY-O4-C2 TOPFRAME

(Packed as accessories by frame supplier)

POS-No.	QTY	FILE-No.	ITEM No.	DESCRIPTION	NOTES
Packed as accessories at Cube					
1	1	19-02004		frame_20_HY-CARGO	
2	8	ISO7380M6x50		SCREW	6-8 Nm
3	8	ISO 7043-M6		NUT	with flange
4	10	ISO7090-6		WASHER	
5	1	19-05288	3343	top-frame_20_HY-CARGO	

HEADSET DIMENSION Top: 1 1/8" semi integrated Bottom: 1 1/8" semi integrated
STEERING TUBE BEARING Top: 1 1/8" semi integrated Bottom: 1 1/8" semi integrated
SEAT POST DIAMETER 30,9 MM
SEAT CLAMP DIAMETER 34,9 MM
BRAKEMOUNT PM 203 MM
DROPOUT QR 135 MM
MOTOR Bosch Gen 4
BATTERY Bosch Ontube 500Wh

two washers under each screw here

label with: "Beipack"

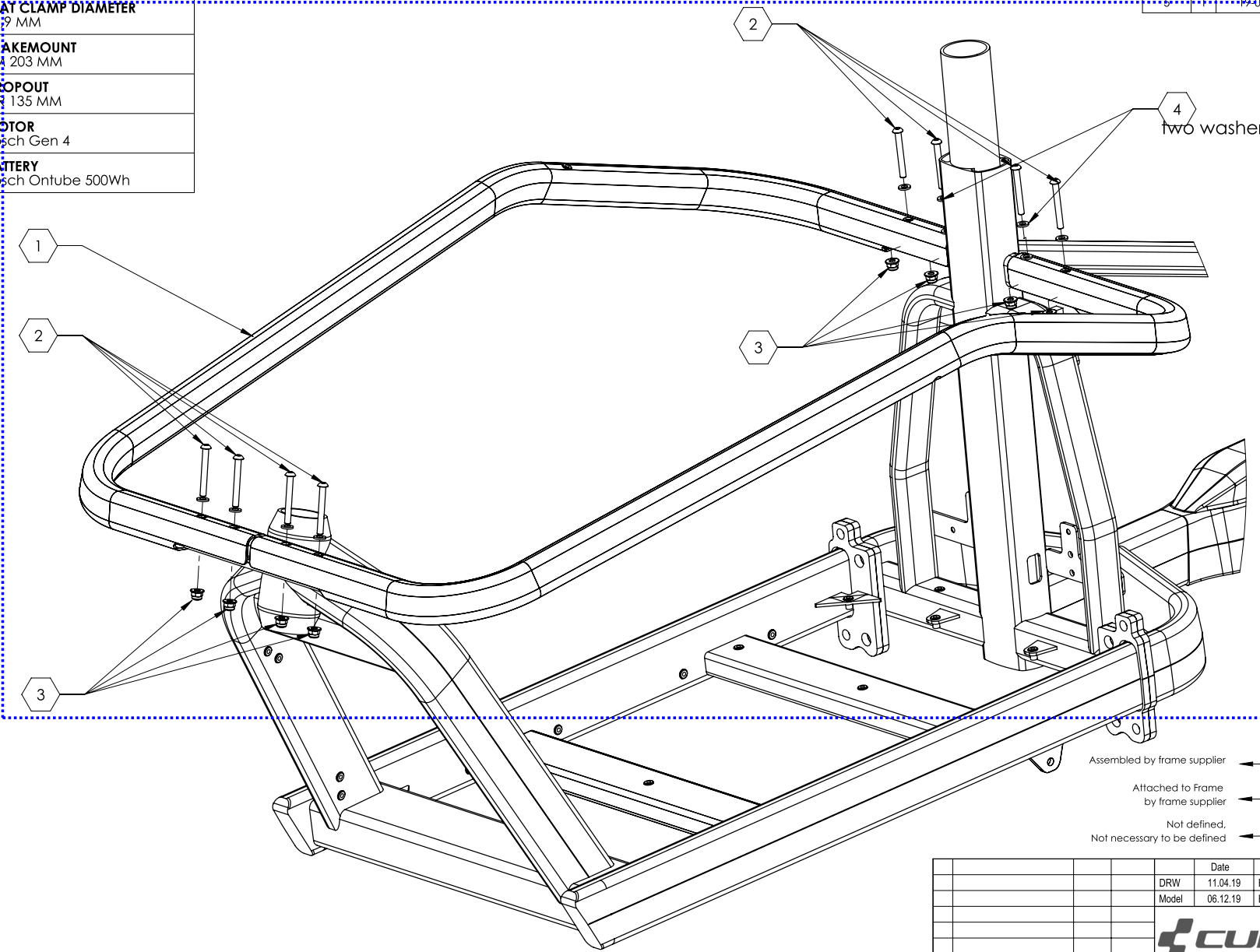
label with: "Montage"

- Pre-Assembled by Frame Supplier - thread in only, no torque-
- Assembled by frame supplier
- Attached to Frame by frame supplier
- Not defined, Not necessary to be defined
- Assembled by CUBE
- Option: Assembled by CUBE
- Packed as Accessory at CUBE

	Date	Name	Project	Scale
	DRW 11.04.19	Eckart Schirmer	20_HY-CARGO	1:4
	Model 06.12.19	Eckart Schirmer		
			Specification	Size
			TOPFRAME	A3
			File	Page
			19-02003	10/11
			ZPG GmbH & Co. KG	
R	Revision	Date	Name	

NOTE: The information or material contained in this document is STRICTLY CONFIDENTIAL and any recipient of this document shall not disclose or divulge, directly or indirectly, this document or the information or material contained herein without the written consent of the company MIB-CAD. All copyrights, trademarks, patents and other rights in connection herewith are expressly reserved to the company MIB-CAD and no license is created hereby.

HINWEIS: Sämtliche Informationen, die in diesem Dokument enthalten sind, sind STRENG VERTRAULICH. Jeder Empfänger dieses Dokuments darf die darin enthaltenen Informationen, direkt oder indirekt, nur mit ausdrücklicher schriftlicher Zustimmung der Firma MIB-CAD an Dritte weitergeben oder offenlegen. Die Firma MIB-CAD behält sich alle Rechte in Bezug auf Urheberrechtsgesetz, Patent- und Gebrauchsmusterschutz vor. Lizenzrechte werden hierdurch nicht erteilt.



NOTE: The information or material contained in this document is STRICTLY CONFIDENTIAL and any recipient of this document shall not disclose or divulge, directly or indirectly, this document or the information or material contained herein without the written consent of the company MIB-CAD. All copyrights, trademarks, patents and other rights in connection herewith are expressly reserved to the company MIB-CAD and no license is created hereby.

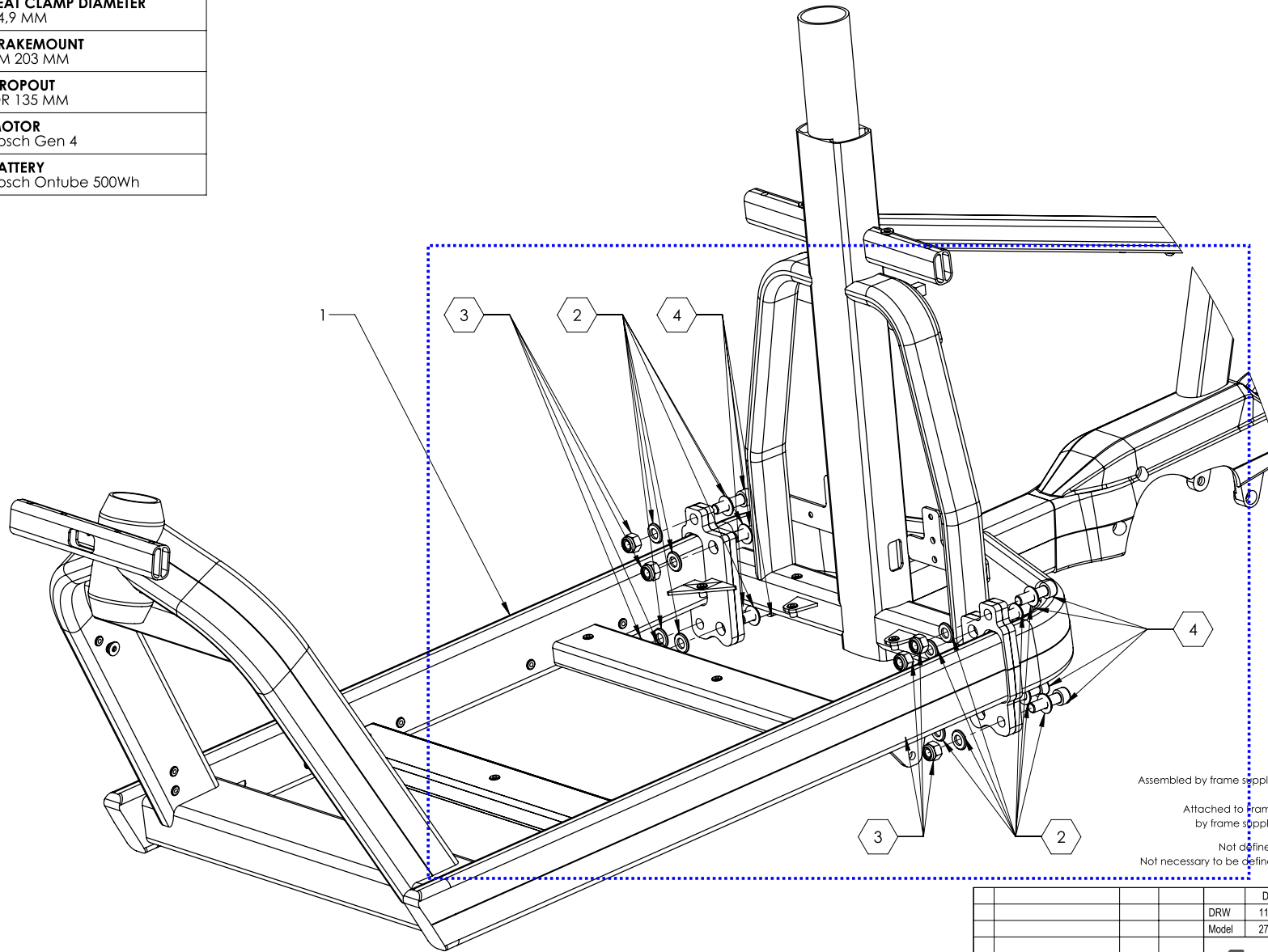
HEADSET DIMENSION Top: 1 1/8" semi integrated Bottom: 1 1/8" semi integrated
STEERING TUBE BEARING Top: 1 1/8" semi integrated Bottom: 1 1/8" semi integrated
SEAT POST DIAMETER 30,9 MM
SEAT CLAMP DIAMETER 34,9 MM
BRAKEMOUNT PM 203 MM
DROPOUT QR 135 MM
MOTOR Bosch Gen 4
BATTERY Bosch Ontube 500Wh

20_HY-O4-C2

FRONT-REAR-ASSEMBLY

(Assembled by dealer)

POS-No.	QTY	FILE-No.	ITEM No.	DESCRIPTION	NOTES
1	1	19-02004		frame_20_HY-CARGO	
Packed as accessories at Cube					
2	16	ISO7090-10		WASHER	
3	8	ISO7040M10		NUT	
4	8	ISO4762M10x35		SCREW	55Nm



label with: "Beipack"

- Pre-Assembled by Frame Supplier
-thread in only, no torque-
- Assembled by frame supplier
- Attached to frame by frame supplier
- Not defined, Not necessary to be defined
- Assembled by CUBE
- Option: Assembled by CUBE
- Packed as Accessory at CUBE

HINWEIS: Sämtliche Informationen, die in diesem Dokument enthalten sind, sind STRENG VERTRAULICH. Jeder Empfänger dieses Dokuments darf die darin enthaltenen Informationen, direkt oder indirekt, nur mit ausdrücklicher, schriftlicher Zustimmung der Firma MIB-CAD an Dritte weitergeben oder offenlegen. Die Firma MIB-CAD behält sich alle Rechte in Bezug auf Urheberrecht, Patent- und Gebrauchsmusterschutz vor. Lizenzrechte werden hierdurch nicht erteilt.

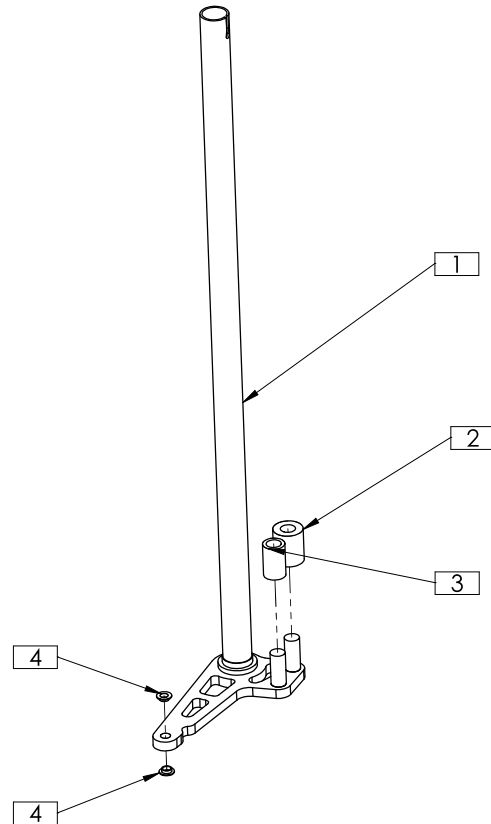
DRW	Date	Name	Project	Scale
	11.04.19	Eckart Schirmer	20_HY-CARGO	1:4
	27.11.19	Tim Barthel		
Specification FRONT-REAR-ASSEMBLY				Size A3
File 19-02003				Page 11/11
R	Revision	Date	Name	

CUBE
ZPG GmbH & Co. KG

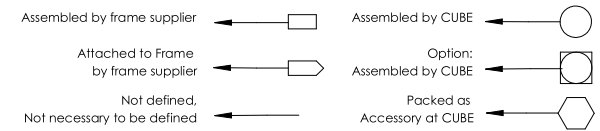
NOTE: The information or material contained in this document is STRICTLY CONFIDENTIAL, and any recipient of this document shall not disclose or divulge, directly or indirectly, this document or the information or material contained herein without the written consent of the company ZPG GmbH & Co. KG. All rights, trademarks, patents and other rights in connection herewith are expressly reserved to the company ZPG GmbH & Co. KG and no license is created hereby.


HINWEIS: Sämtliche Informationen, die in diesem Dokument enthalten sind, sind STRENG VERTRAULICH. Jeder Empfänger dieses Dokuments darf die darin enthaltenen Informationen, direkt oder indirekt, nur mit ausdrücklicher schriftlicher Zustimmung der Firma ZPG GmbH & Co. KG an Dritte weitergeben oder offenlegen. Die Firma ZPG GmbH & Co. KG behält sich alle Rechte in Bezug auf Urheberrechtsgesetz, Patent- und Gebrauchsmusterschutz vor. Lizenzrechte werden hierdurch nicht erteilt.

Steering-arm-_20_HY-CARGO (19-05304) #3347



POS-No.	QTY	FILE-No.	ITEM No.	DESCRIPTION	NOTES
1	1	19-02893		steering-shaft_20_HY-CARGO	
2	1	20-06132	3500	Steering stopper-30mm_hard_20_HY-CARGO	
3	1	20-02087	3499	Steering stopper-22mm_soft_20_HY-CARGO	
4	2	20-01329		bearing IGUS 10x8x4	



2D / DRW - file		Material		Project		Scale
Last save	Version	Date	Name	20_HY-CARGO		1:10
13.11.2020		28.11.19	ESC	Standard		Size A3
			Tim Barthel	File		Page 12
 ZPG GmbH & Co. KG				19-05304		
				Revision		Date